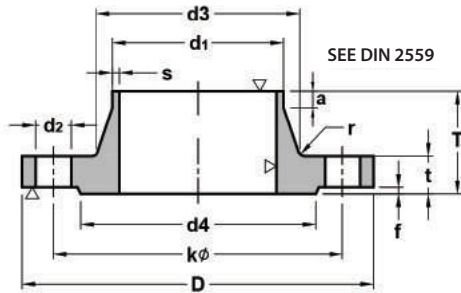


DIN FLANGES

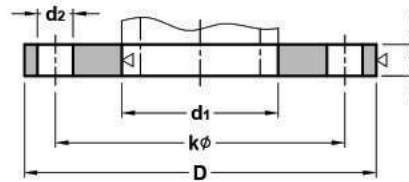


**UNGGUL
PRAKARSA
PRISMA**

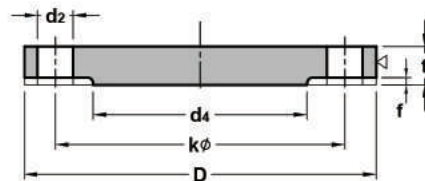
DIN 6BAR



WELDING NECK



SLIP-ON



BLIND

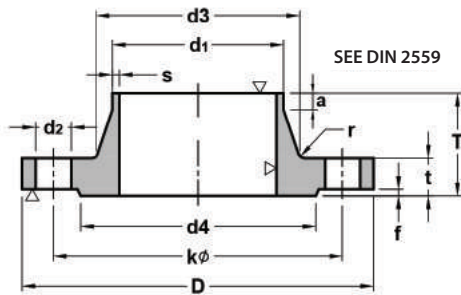
DIN 2573 SLIP - ON FLANGES
DIN 2527 BLIND FLANGES
DIN 2631 WELDING NECK FLANGES

Unit : mm

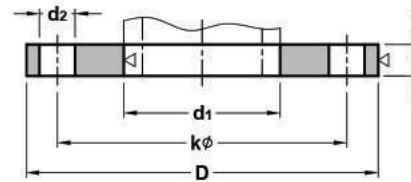
SIZE		Common Dimension							Hub			Radised Face		Drilling			Approx. Weight			
Nominal Bore	d ₁		D	t			kφ	T	d ₃	s	r	a	d ₄	f	Number of Bolt	Dia. of Bolt	d ₂	DIN 2573	DIN 2631	
	*	*		Welding Neck	Slip-on	Blind														*
10	17.2	14	75	12	12	12	50	28	22 26	1.8	4	6	35	2	4	M10	-	11	0.363	0.335
15	21.3	20	80	12	12	12	55	30	28 30	2	4	6	40	2	4	M10	-	11	0.41	0.392
20	26.9	25	90	14	14	14	65	32	35 38	2.3	4	6	50	2	4	M10	-	11	0.6	0.592
25	33.7	30	100	14	14	14	75	35	40 42	2.6	4	6	60	2	4	M10	-	11	0.74	0.747
32	42.4	38	120	14	16	14	90	35	50 55	2.6	6	6	70	2	4	M12	(1/2")	14	1.19	1.05
40	48.3	44.5	130	14	16	14	100	38	58 62	2.6	6	7	80	3	4	M12	(1/2")	14	1.39	1.18
50	60.3	57	140	14	16	14	110	38	70 74	2.9	6	8	90	3	4	M12	(1/2")	14	1.53	1.34
65	76.1	-	160	14	16	14	130	38	88	2.9	6	9	110	2	4	M12	(1/2")	14	1.89	1.67
80	88.9	-	190	16	18	16	150	42	102	3.2	8	10	128	3	4	M16	(5/8")	18	2.98	2.71
100	114.3	108	210	16	18	16	170	45	122 130	3.6	8	10	148	3	4	M16	(5/8")	18	3.46	3.24
125	139.7	133	240	18	20	18	200	48	148 155	4	8	10	178	3	8	M16	(5/8")	18	4.6	4.49
150	168.3	159	265	18	20	18	225	48	172 184	4.5	10	12	202	3	8	M16	(5/8")	18	5.22	5.15
200	219.1	-	320	20	22	20	280	55	236	5.9	10	15	258	3	8	M16	(5/8")	18	7.15	7.78
250	273	267	375	22	24	22	335	60	282 290	6.3	12	15	312	3	12	M16	(5/8")	18	9.61	10.8
300	323.9	-	440	22	24	22	395	62	342	7.1	12	15	365	4	12	M20	(3/4")	22	12.6	14.0
350	355.6	368	490	22	26	22	445	62	385	7.1	12	15	415	4	12	M20	(3/4")	22	15.6	18.5
400	406.4	419	540	22	28	22	495	65	438	7.1	12	15	465	4	16	M20	(3/4")	22	18.4	21.2
500	508	-	645	24	30	24	600	68	538	7.1	12	15	570	4	20	M20	(3/4")	22	24.5	28.6
600	610	-	755	24	-	-	705	70	640	7.1	12	16	670	5	20	M24	(7/8")	26	-	31.5
700	711	-	860	24	-	-	810	70	740	7.1	12	16	775	5	24	M24	(7/8")	26	-	37.4
800	813	-	975	24	-	-	920	70	842	7.1	12	16	880	5	24	M27	(1")	30	-	46.1
900	914	-	1075	26	-	-	1020	70	942	7.1	12	16	980	5	24	M27	(1")	30	-	55.6
1000	1016	-	1175	26	-	-	1120	70	1045	7.1	16	16	1080	5	28	M27	(1")	30	-	61.9

* Dimensions are only used in Germany

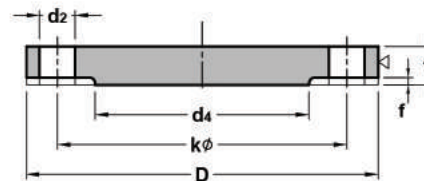
DIN 10BAR



WELDING NECK



SLIP-ON



BLIND

DIN 2576 SLIP - ON FLANGES

DIN 2527 BLIND FLANGES

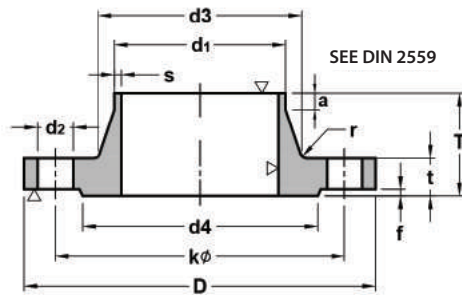
DIN 2632 WELDING NECK FLANGES

Unit : mm

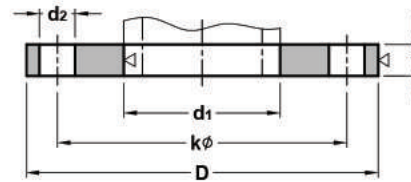
SIZE			Common Dimension					Hub			Radised Face		Drilling			Approx. Weight				
Nominal Bore	d ₁		D	t			kφ	T	d ₃	s	r	a	d ₄	f	Number of Bolt	Dia. of Bolt	d ₂	DIN 2576	DIN 2632	
	*	*		Welding Neck	Slip-on	Blind														*
10	17.2	14	90	14	14	14	60	35	25 28	1.8	4	6	40	2	4	M12	(1/2")	14	0.605	0.58
15	21.3	20	95	14	14	14	65	35	30 32	2	4	6	45	2	4	M12	(1/2")	14	0.669	0.648
20	26.9	25	105	16	16	16	75	38	38 40	2.3	4	6	58	2	4	M12	(1/2")	14	0.936	0.952
25	33.7	30	115	16	16	16	85	38	42 45	2.6	4	6	68	2	4	M12	(1/2")	14	1.11	1.14
32	42.4	38	140	16	16	16	100	40	52 56	2.6	6	6	78	2	4	M16	(5/8")	18	1.62	1.69
40	48.3	44.5	150	16	16	16	110	42	60 64	2.6	6	7	88	3	4	M16	(5/8")	18	1.86	1.86
50	60.3	57	165	18	18	18	125	45	72 75	2.9	6	8	102	3	4	M16	(5/8")	18	2.47	2.53
65	76	-	185	18	18	18	145	45	90	2.9	6	10	122	3	4	M16	(5/8")	18	3	3.06
80	88.9	-	200	20	20	20	160	50	105	3.2	8	10	138	3	8	M16	(5/8")	18	3.79	3.7
100	114.3	108	220	20	20	20	180	52	125 131	3.6	8	12	158	3	8	M16	(5/8")	18	4.03	4.62
125	139.7	133	250	22	22	22	210	55	150 156	4	8	12	188	3	8	M16	(5/8")	18	5.46	6.3
150	168.3	159	285	22	22	22	240	55	175 184	4.5	10	12	212	3	8	M20	(3/4")	22	6.57	7.75
200	219.1	-	340	24	24	24	295	62	235	5.9	10	16	268	3	8	M20	(3/4")	22	9.31	11.3
250	273	267	395	26	26	26	350	68	285 292	6.3	12	16	320	3	12	M20	(3/4")	22	11.9	14.7
300	323.9	-	445	26	26	26	400	68	344	7.1	12	16	370	4	12	M20	(3/4")	22	13.8	17.4
350	355.6	368	505	26	28	26	460	68	385	7.1	12	16	430	4	16	M20	(3/4")	22	20.6	23.6
400	406.4	419	565	26	32	26	515	72	440	7.1	12	16	482	4	16	M24	(7/8")	26	27.9	28.6
500	508	-	670	28	38	28	620	75	542	7.1	12	16	585	4	20	M24	(7/8")	26	41.1	38.1
600	610	-	780	28	-	-	725	80	642	7.1	12	18	685	5	20	M27	(1")	30	-	44.6
700	711	-	895	30	-	-	840	80	745	8	12	18	800	5	24	M27	(1")	30	-	62.4
800	813	-	1015	32	-	-	950	90	850	8	12	18	905	5	24	M30	(1 1/8")	33	-	84.1
900	914	-	1115	34	-	-	1050	95	950	10	12	20	1005	5	28	M30	(1 1/8")	33	-	98.5
1000	1016	-	1230	34	-	-	1160	95	1052	10	16	20	1110	5	28	M33	(1 1/8")	36	-	115

* Dimensions are only used in Germany

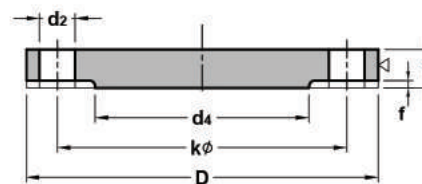
DIN 16BAR



WELDING NECK



SLIP-ON



BLIND

DIN 2543 SLIP - ON FLANGES

DIN 2527 BLIND FLANGES

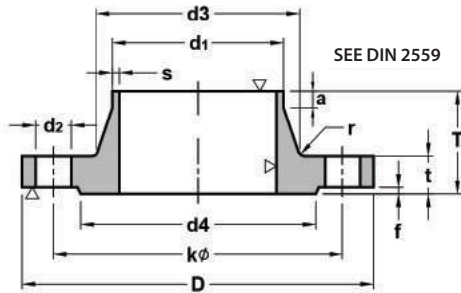
DIN 2633 WELDING NECK FLANGES

Unit : mm

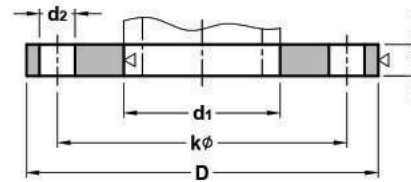
SIZE			Common Dimension						Hub			Radised Face		Drilling			Approx. Weight			
Nominal Bore	d ₁		D	t			kφ	T	d ₃	s	r	a	d ₄	f	Number of Bolt	Dia. of Bolt	d ₂	DIN 2543	DIN 2633	
	*	*		Welding Neck	Slip-on	Blind														*
10	17.2	14	90	14	14	14	60	35	25 28	1.8	4	6	40	2	4	M12	(1/2")	14	0.63	0.58
15	21.3	20	95	14	14	14	65	35	30 32	2	4	6	45	2	4	M12	(1/2")	14	0.72	0.648
20	26.9	25	105	16	16	16	75	38	38 40	2.3	4	6	58	2	4	M12	(1/2")	14	1.01	0.952
25	33.7	30	115	16	16	16	85	38	42 45	2.6	4	6	68	2	4	M12	(1/2")	14	1.23	1.14
32	42.4	38	140	16	16	16	100	40	52 56	2.6	6	6	78	2	4	M16	(5/8")	18	1.8	1.69
40	48.3	44.5	150	16	16	16	110	42	60 64	2.6	6	7	88	3	4	M16	(5/8")	18	2.09	1.86
50	60.3	57	165	18	18	18	125	45	72 75	2.9	6	8	102	3	4	M16	(5/8")	18	2.88	2.53
65	76	-	185	18	18	18	145	45	90	2.9	6	10	122	3	4	M16	(5/8")	18	3.66	3.06
80	88.9	-	200	20	20	20	160	50	105	3.2	8	10	138	3	8	M16	(5/8")	18	4.77	3.7
100	114.3	108	220	20	20	20	180	52	125 131	3.6	8	12	158	3	8	M16	(5/8")	18	5.65	4.62
125	139.7	133	250	22	22	22	210	55	150 156	4	8	12	188	3	8	M16	(5/8")	18	8.42	6.3
150	168.3	159	285	22	22	22	240	55	175 184	4.5	10	12	212	3	8	M20	(3/4")	22	10.4	7.75
200	219.1	-	340	24	24	24	295	62	235	5.9	10	16	268	3	12	M20	(3/4")	22	16.1	11
250	273	267	405	26	26	26	355	70	285 292	6.3	12	16	320	3	12	M24	(7/8")	26	24.9	15.6
300	323.9	-	460	28	28	28	410	78	344	7.1	12	16	378	4	12	M24	(7/8")	26	35.1	22
350	355.6	368	520	30	30	30	470	82	390	8	12	16	438	4	16	M24	(7/8")	26	47.8	28.8
400	406.4	419	580	32	32	32	525	85	445	8	12	16	490	4	16	M27	(1")	30	63.5	36.3
500	508	-	715	34	36	36	650	90	548	8	12	16	610	4	20	M30	(1 1/8")	33	102	61.0
600	610	-	840	36	40	-	770	95	652	8.8	12	18	725	5	20	M33	(1 1/4")	36	-	75.4
700	711	-	910	36	-	-	840	100	755	8.8	12	18	795	5	24	M33	(1 1/4")	36	-	77.0
800	813	-	1025	38	-	-	950	105	855	10	12	20	900	5	24	M36	(1 3/8")	39	-	101
900	914	-	1125	40	-	-	1050	110	955	10	12	20	1000	5	28	M36	(1 3/8")	39	-	122
1000	1016	-	1255	42	-	-	1170	120	1058	10	16	22	1115	5	28	M39	(1 1/2")	42	-	162

* Dimensions are only used in Germany

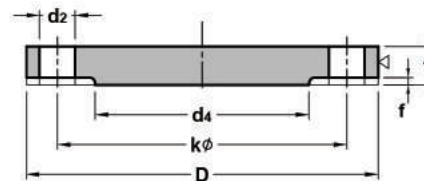
DIN 25BAR



WELDING NECK



SLIP-ON



BLIND

DIN 2544 SLIP - ON FLANGES

DIN 2527 BLIND FLANGES

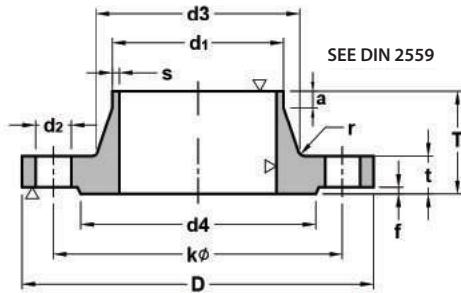
DIN 2634 WELDING NECK FLANGES

Unit : mm

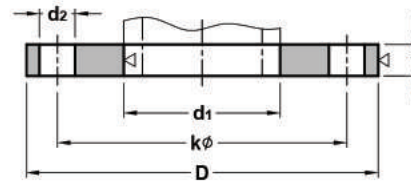
SIZE			Common Dimension						Hub			Radised Face		Drilling			Approx. Weight		
Nominal Bore	d ₁		D	t			kφ	T	d ₃	s	r	a	d ₄	f	Number of Bolt	Dia. of Bolt	d ₂	DIN 2544	DIN 2634
	*	*		Welding Neck	Slip-on	Blind													
10	17.2	14	90	16	16	16	60	35	25/28	1.8	4	6	40	2	4	M12 (1/2")	14	0.72	0.661
15	21.3	20	95	16	16	16	65	38	30/32	2	4	6	45	2	4	M12 (1/2")	14	0.81	0.746
20	26.9	25	105	18	18	18	75	40	38/40	2.3	4	6	58	2	4	M12 (1/2")	14	1.24	1.06
25	33.7	30	115	18	18	18	85	40	42/45	2.6	4	6	68	2	4	M12 (1/2")	14	1.38	1.29
32	42.4	38	140	18	18	18	100	42	52/56	2.6	6	6	78	2	4	M16 (5/8")	18	2.03	1.88
40	48.3	44.5	150	18	18	18	110	45	60/64	2.6	6	7	88	3	4	M16 (5/8")	18	2.35	2.33
50	60.3	57	165	20	20	20	125	48	72/75	2.9	6	8	102	3	4	M16 (5/8")	18	3.2	2.82
65	76	-	185	22	22	22	145	52	90	2.9	6	10	122	3	8	M16 (5/8")	18	4.29	3.74
80	88.9	-	200	24	24	24	160	58	105	3.2	8	12	138	3	8	M16 (5/8")	18	5.88	4.75
100	114.3	108	235	24	24	24	190	65	128/134	3.6	8	12	162	3	8	M20 (3/4")	22	7.54	6.52
125	139.7	133	270	26	26	26	220	68	155/162	4	8	12	188	3	8	M24 (7/8")	26	10.8	9.07
150	168.3	159	300	28	28	28	250	75	182/192	4.5	10	12	218	3	8	M24 (7/8")	26	14.5	11.8
200	219.1	-	360	30	30	30	310	80	244	6.3	10	16	278	3	12	M24 (7/8")	26	22.3	17.0
250	273	267	425	32	32	32	370	88	292/298	7.1	12	18	335	3	12	M27 (1")	30	33.5	24.4
300	323.9	-	485	34	34	34	430	92	352	8	12	18	395	4	16	M27 (1")	30	46.3	31.2
350	355.6	368	555	38	38	38	490	100	398	8	12	20	450	4	16	M30 (1 1/4")	33	68	47.2
400	406.4	419	620	40	40	40	550	110	452	8.8	12	20	505	4	16	M33 (1 1/4")	36	89.7	61.7
500	508	-	730	44	44	45	660	125	558	10	12	20	615	4	20	M33 (1 1/4")	36	138	89.6
600	610	-	845	46	-	-	770	125	660	11	12	20	720	5	20	M36 (1 3/8")	39	-	104
700	711	-	960	46	-	-	875	125	760	12.5	12	20	820	5	24	M39 (1 1/2")	42	-	136
800	813	-	1085	50	-	-	990	135	865	14.2	12	22	930	5	24	M45 (1 3/4")	48	-	186
900	914	-	1185	54	-	-	1090	145	968	16	12	24	1030	5	28	M45 (1 3/4")	48	-	236
1000	1016	-	1320	58	-	-	1210	155	1070	17.5	16	24	1140	5	28	M52 (2")	56	-	307

* Dimensions are only used in Germany

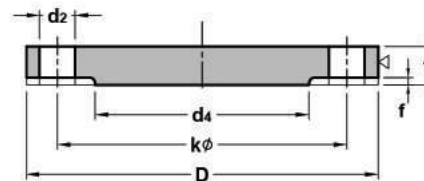
DIN 40BAR



WELDING NECK



SLIP-ON



BLIND

DIN 2545 SLIP - ON FLANGES

DIN 2527 BLIND FLANGES

DIN 2635 WELDING NECK FLANGES

Unit : mm

SIZE			Common Dimension						Hub			Radised Face		Drilling			Approx. Weight			
Nominal Bore	d ₁		D	t			kφ	T	d ₃	s	r	a	d ₄	f	Number of Bolt	Dia. of Bolt	d ₂	DIN 2545	DIN 2635	
	*	*		Welding Neck	Slip-on	Blind														
	ANSI																			
10	17.2	14	90	16	16	16	60	35	25 28	1.8	4	6	40	2	4	M12	(1/2")	14	0.72	0.661
15	21.3	20	95	16	16	16	65	38	30 32	2	4	6	45	2	4	M12	(1/2")	14	0.81	0.746
20	26.9	25	105	18	18	18	75	40	38 40	2.3	4	6	58	2	4	M12	(1/2")	14	1.24	1.06
25	33.7	30	115	18	18	18	85	40	42 46	2.6	4	6	68	2	4	M12	(1/2")	14	1.38	1.29
32	42.4	38	140	18	18	18	100	42	52 56	2.6	6	6	78	2	4	M16	(5/8")	18	2.03	1.88
40	48.3	44.5	150	18	18	18	110	45	60 64	2.6	6	7	88	3	4	M16	(5/8")	18	2.35	2.33
50	60.3	57	165	20	20	20	125	48	72 75	2.9	6	8	102	3	4	M16	(5/8")	18	3.2	2.82
65	76	-	185	22	22	22	145	52	90	2.9	6	10	122	3	8	M16	(5/8")	18	4.29	3.74
80	88.9	-	200	24	24	24	160	58	105	3.2	8	12	138	3	8	M16	(5/8")	18	5.88	4.75
100	114.3	108	235	24	24	24	190	65	128 134	3.6	8	12	162	3	8	M20	(3/4")	22	7.54	6.52
125	139.7	133	270	26	26	26	220	68	155 162	4	8	12	188	3	8	M24	(7/8")	26	10.8	9.07
150	168.3	159	300	28	28	28	250	75	182 192	4.5	10	12	218	3	8	M24	(7/8")	26	14.5	11.8
175	193.7	-	350	32	32	32	295	82	218	5.6	10	15	260	3	12	M27	(1")	30	22.1	18.2
200	219.1	-	375	34	34	34	320	88	244	6.3	10	16	285	3	12	M27	(1")	30	27.2	21.5
250	273	267	450	38	38	38	385	105	298 306	7.1	12	18	345	3	12	M30	(1 1/8")	33	43.8	34.9
300	323.9	-	515	42	42	42	450	115	362	8	12	18	410	4	16	M30	(1 1/8")	33	63.3	49.7
350	355.6	368	580	46	46	46	510	125	408	8.8	12	20	465	4	16	M33	(1 1/4")	36	89.5	68.1
400	406.4	419	660	50	50	50	585	135	462	11	12	20	535	4	16	M36	(1 3/8")	39	127	96.5
500	508	-	755	52	52	56	670	140	562	14.2	12	20	615	4	20	M39	(1 1/2")	42	172	117

* Dimensions are only used in Germany