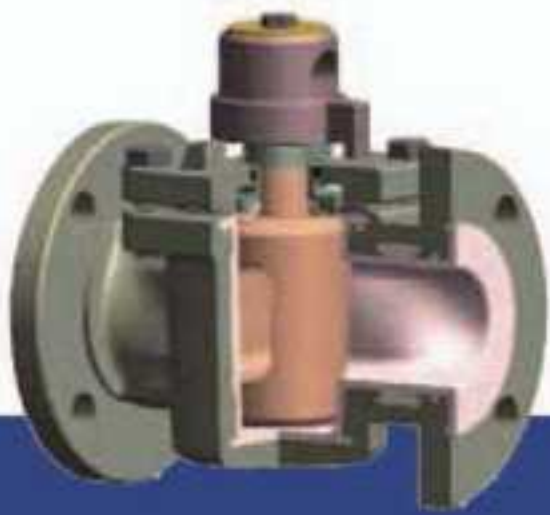




# New Plug Valves



**Non-Lubricated**



**Extended Packing Plug Valves**

**Sleeved Plug Valves**

**Lined Plug Valves**

**Double Block & Bleed Plug Valves**

**Lubricated Plug Valves**



**UNGGUL  
PRAKARSA  
PRISMA**



UNGGUL  
PRAKARSA  
PRISMA



## **TEFLON LINED ACCESSORY VALVES**

## TEFLON LINED BALL CHECK VALVES

Non-Lubricated

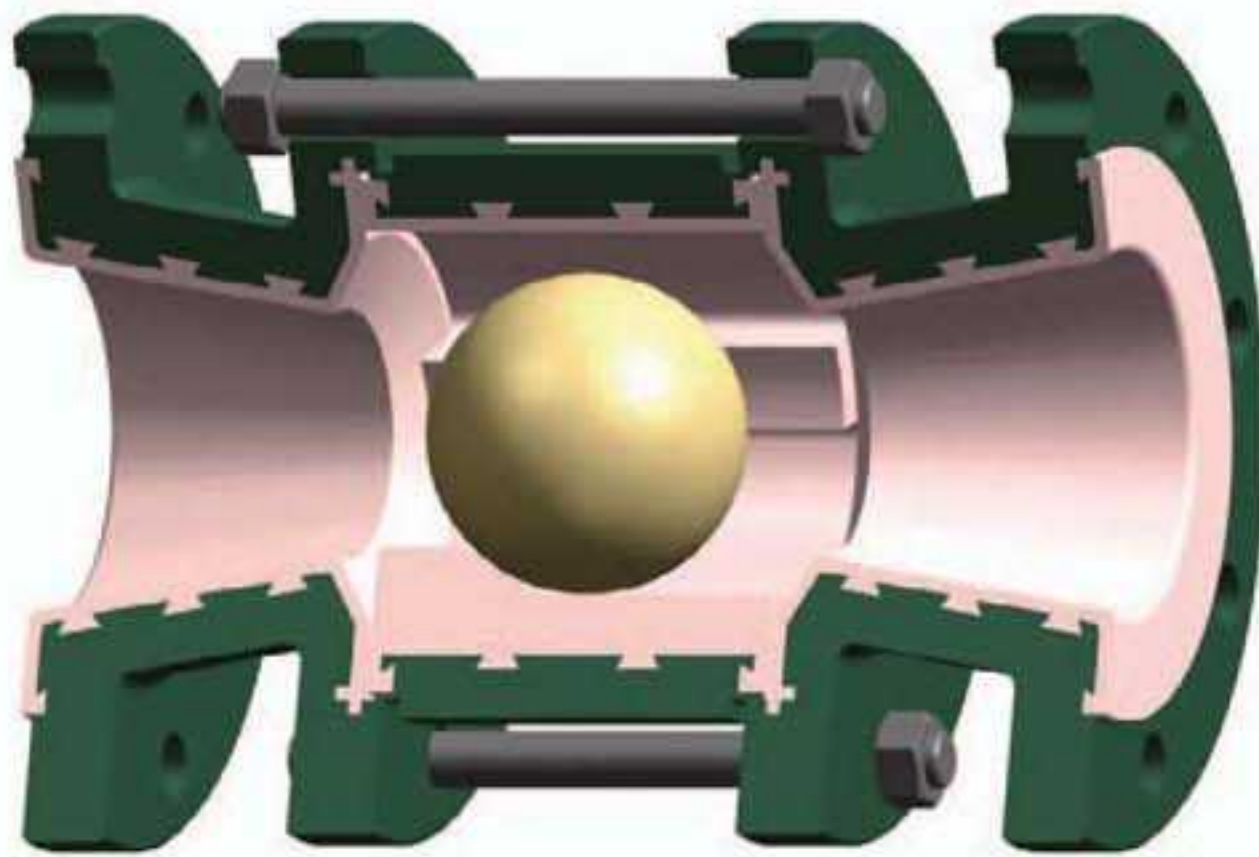
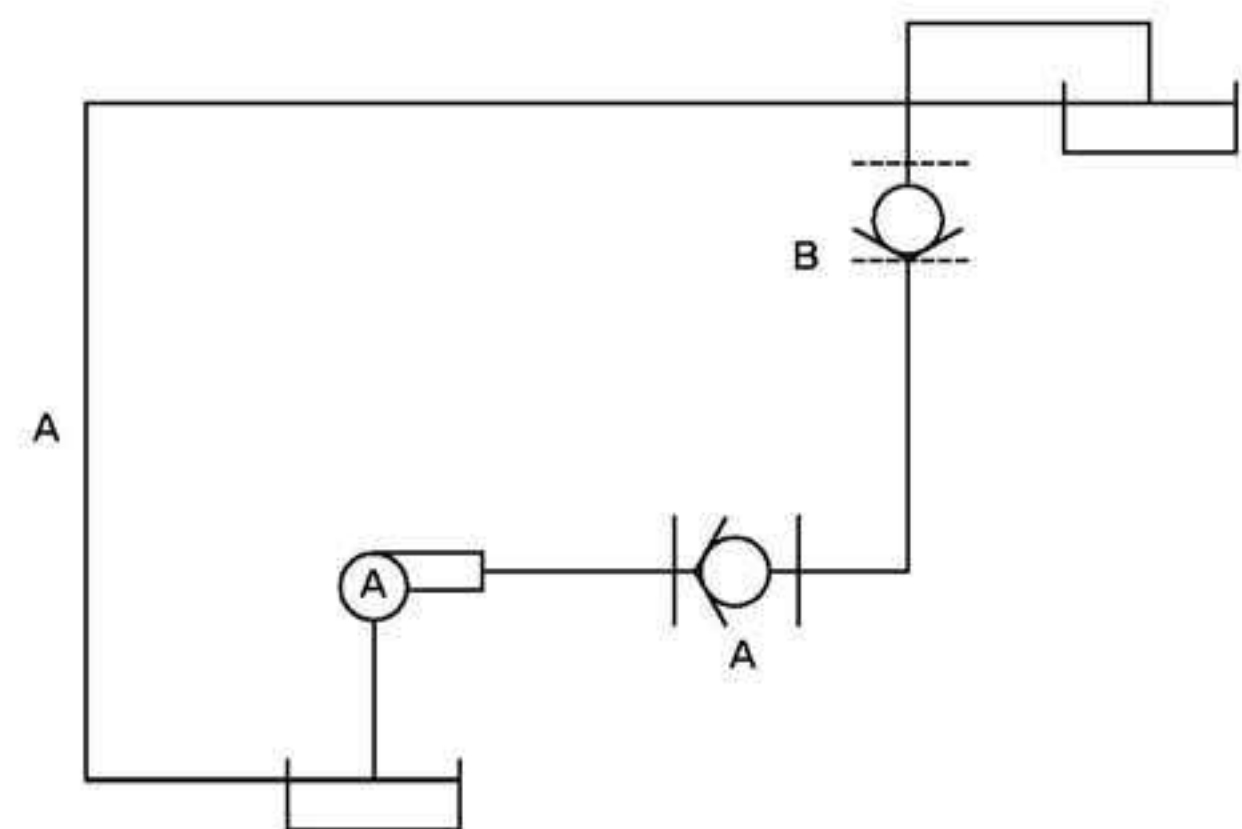


FIG. B25L WCB/PFA  
TEFLON LINED BALL CHECK VALVES



OPERATION DIAGRAM

### ► Structure

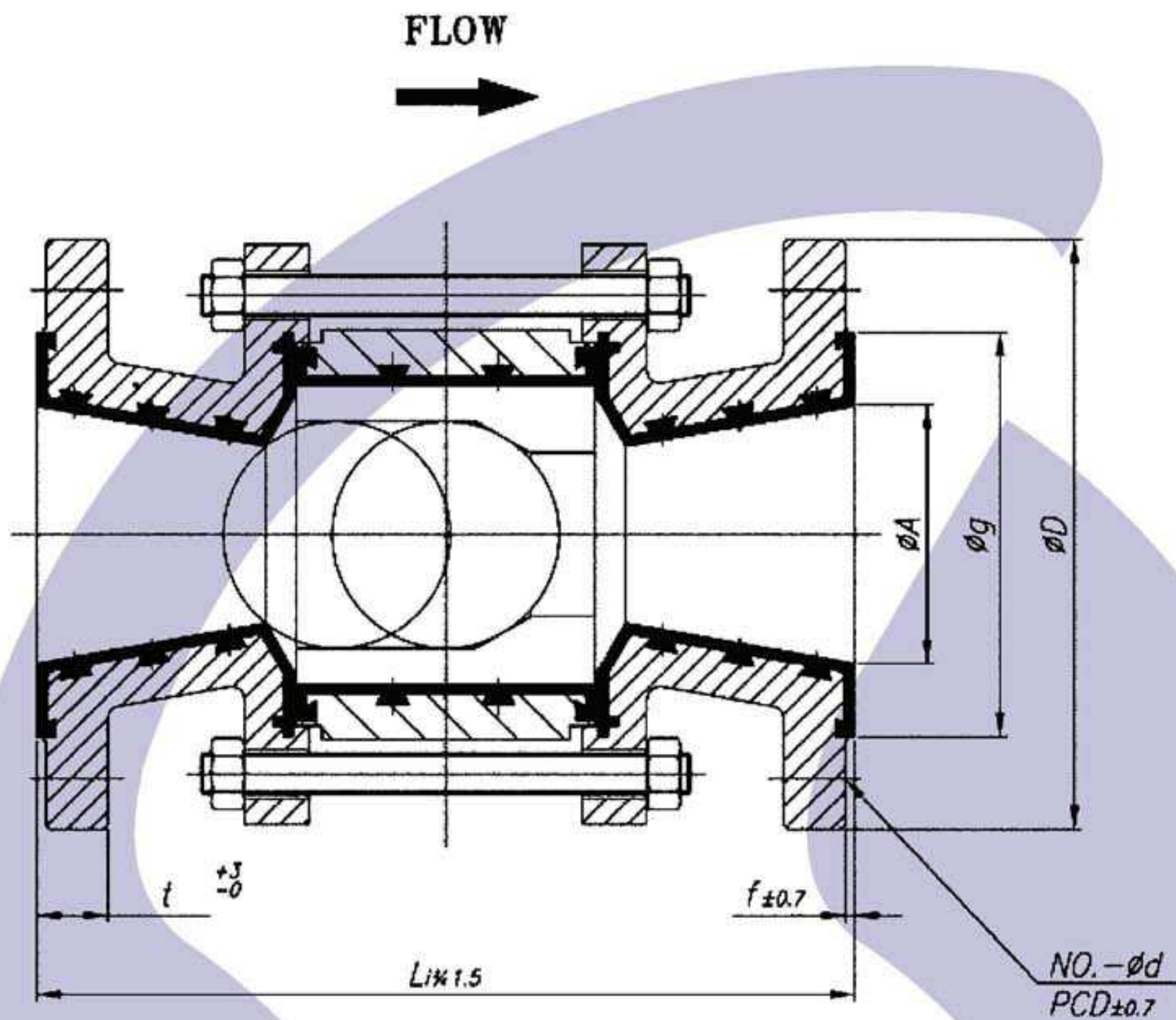
The whole body of the valve has PFA & FEP Teflon linings. RTFE ball moves freely on the Spacer where lining has been done with Teflon materials and the ball stops in the double sided flange passage way. Pressure of the material of the counter flow moves the ball upstream stopping the flow. The spacer of the downstream is in development to ensure there is a free flow.

### Places of use and function

- 1) Prevent harm done on the pump motor by counter flow
- 2) Prevent harm done on the pump impeller by the counter flow
- 3) Interception when the back-head is high

# TEFLON LINED BALL CHECK VALVES

B25L Flanged ANSI class 150



## DIMENSIONS

UNIT : MM

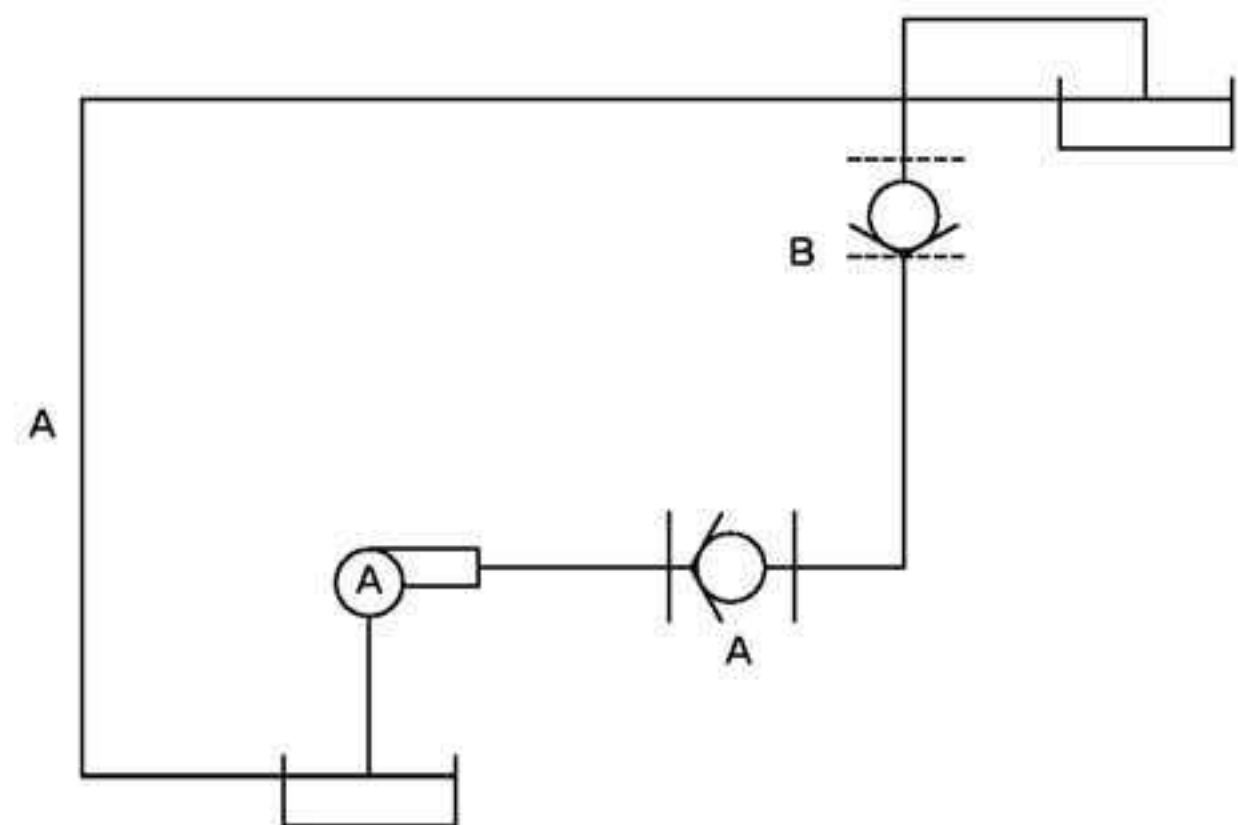
NOMINAL SIZE		L	END FLANGES					WALL THICKNESS	WEIGHT (KG)	ACTUATOR	REMARK		
IN	MM		D	A	g	t	f					BOLT HOLE	
								PCD	NO.	d			
1/2	15	152	89	15	35	10.1	2.0	60.5	4	16	6.4	3	BALL CHECK TYPE
3/4	20	152	98	20	43	10.8	2.0	70.0	4	16	6.4	3.5	
1	25	152	108	25	51	12.6	3.0	79.5	4	16	6.4	4	
1.1/2	40	165	127	38	73	15.6	3.0	98.5	4	16	6.4	10	
2	50	217	152	51	92	17.2	3.0	120.5	4	19	8.7	15	
3	80	254	190	76	127	20.5	3.0	152.2	4	19	10.3	22	
4	100	317	229	102	157	25.8	3.5	190.5	8	19	11.1	378	
6	150	381	279	152	216	27.3	3.5	241.5	8	22	11.9	50	
8	200	482	343	203	270	31.2	3.5	298.5	8	22	12.7	85	
10	250	635	406	250	324	34.2	4.0	362.0	12	25	14.3	127	

## TEFLON LINED SWING CHECK VALVES

Non-Lubricated



FIG. S25L WCB/PFA  
TEFLON LINED SWING CHECK VALVES



OPERATION DIAGRAM

### ► Structure

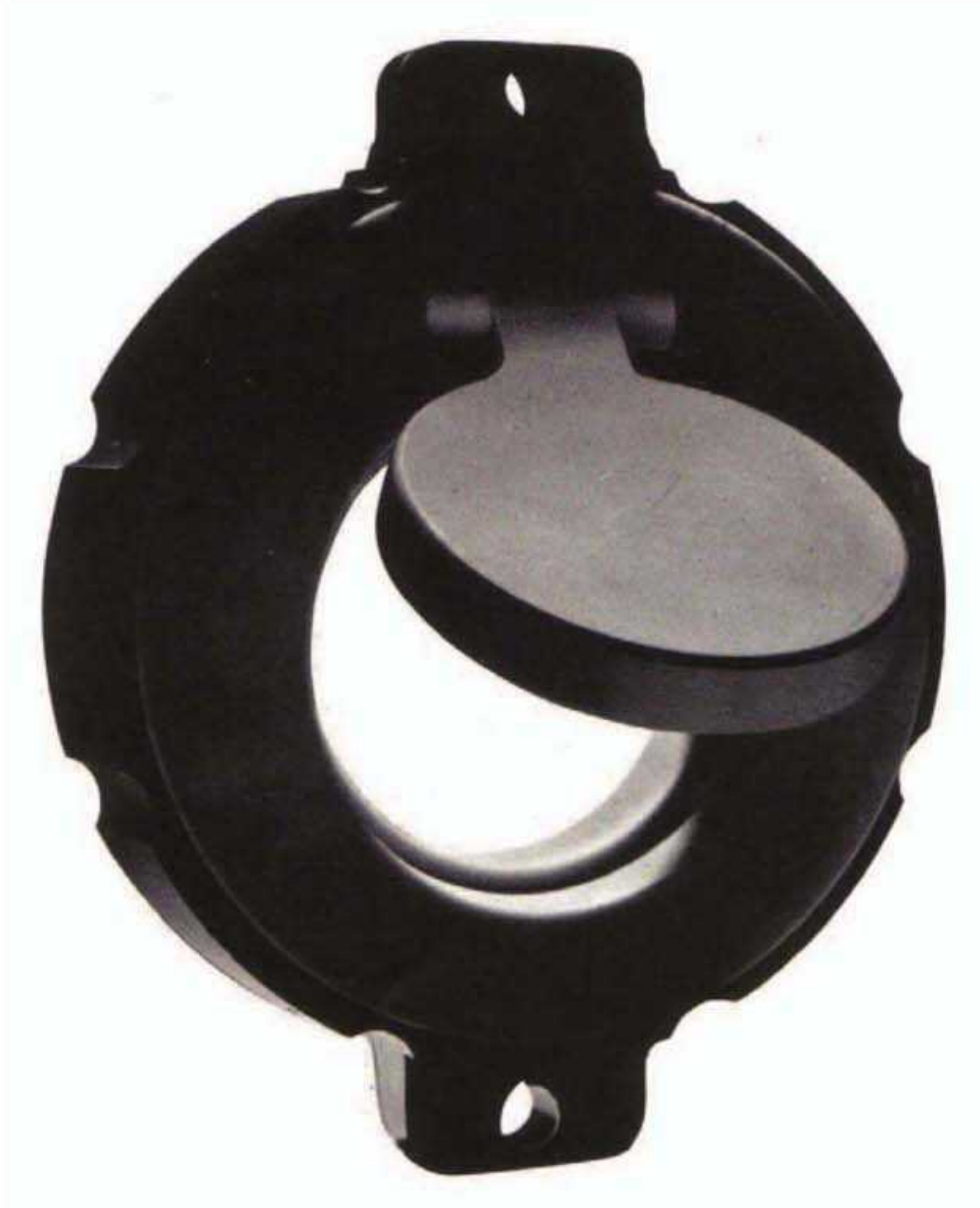
Teflon Lined Swing Check Valve is composed of the Body and 2 Discs all of which come in contact with the flowing bodies. The areas of contact have Teflon lining making the product applicable to places where an anti-corrosive characteristic is needed instead of high steel alloy valves. The disc with an attached hinge between the valve's body and the flange moves to stop or allow the flow.

### Use

- 1) Prevention of the counter rotation of the Pump Motor
- 2) Shock prevention of the Pump
- 3) Shut-off function when the back head is high

## TEFLON LINED SWING CHECK VALVES

Non-Lubricated



### ► Use

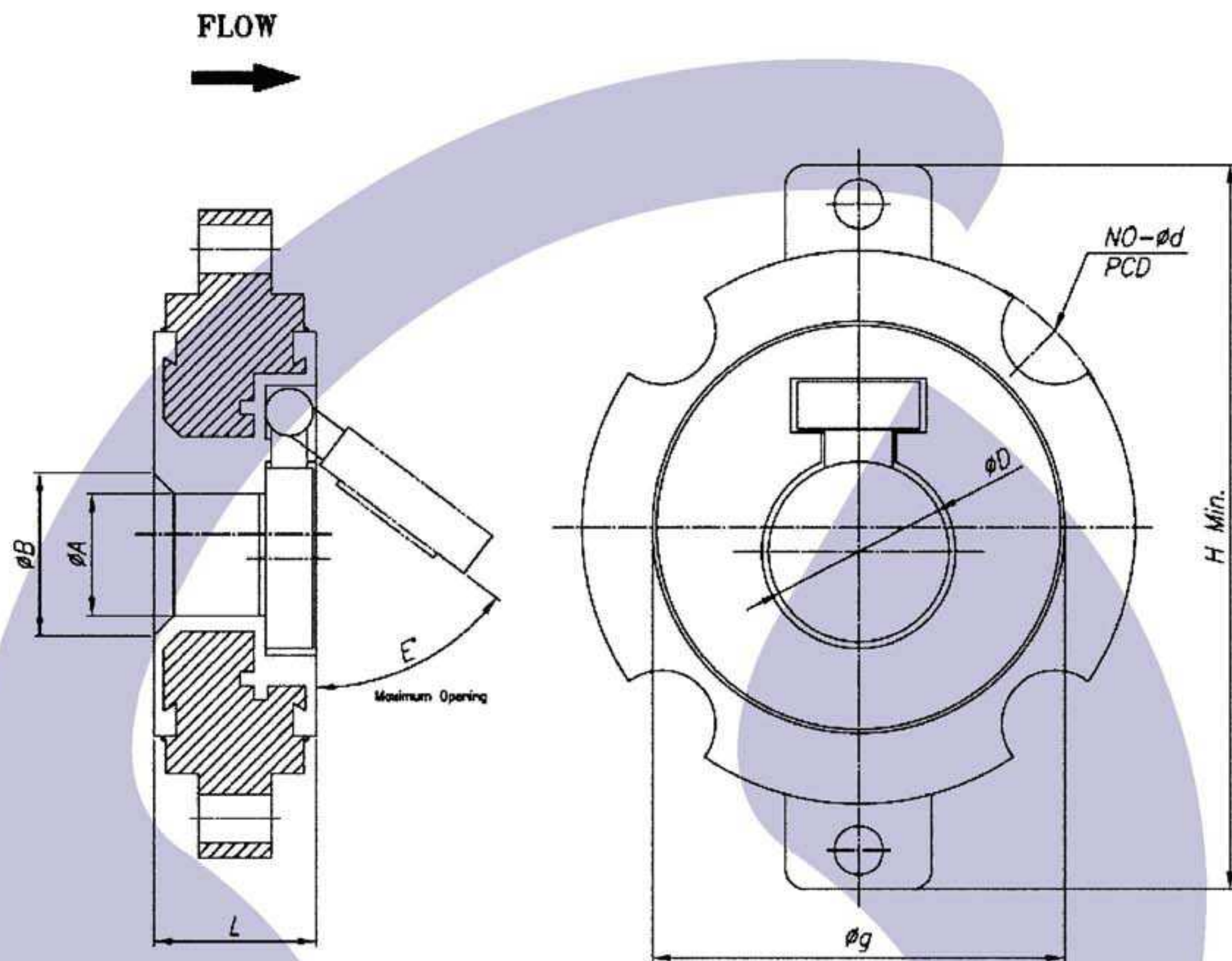
- Vertical and horizontal piping can be available.
- It can be with strong and corrosive liquid instead of an expensive high-alloy valve.
- It has only its own two components since a spring or pin can't be used because of corrosion and oxidation.

### ► Material

Body	WCB(316) / PFA(FEP)
DISC	FEP(PFA) : 4" and Under WCB/PFA(FEP) : 6" and Under LINING THICK 2.4mm Over

# TEFLON LINED WATER TYPE CHECK VALVES

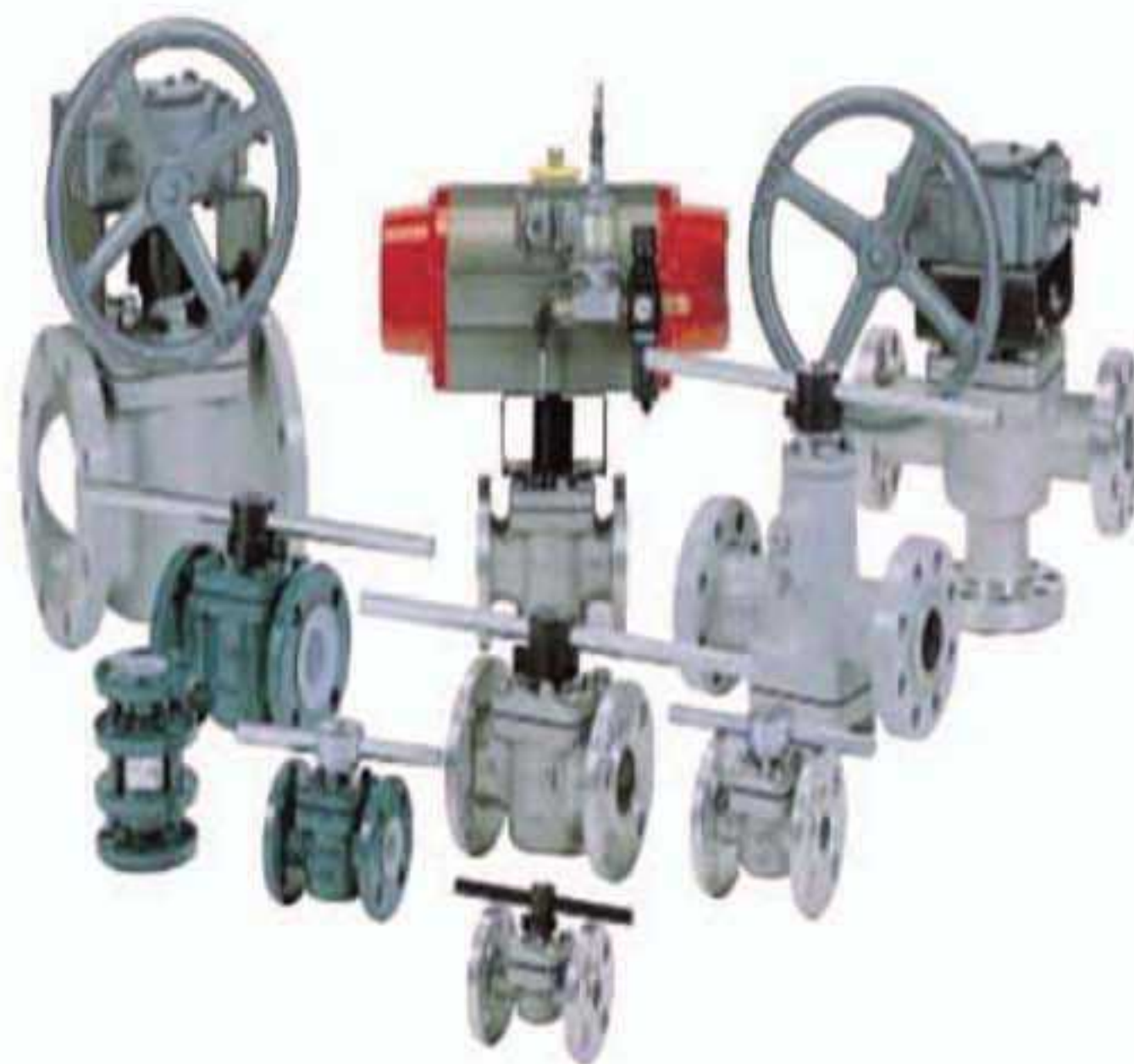
S25L Flanged ANSI class 150



## DIMENSIONS

UNIT : MM

NOMINAL SIZE		L	END FLANGES			A	B	E	H	REMARK
IN	MM		BOLT HOLE							
			g	PCD	NO.	d				
1.1/2	40	40	73	98.5	4	16	25	36	51	105
2	50	40	92	125	4	19	30	40	53	175
3	80	46	127	152.5	4	19	45	55	55	190
4	100	46	157	190.5	8	19	70	80	64	266
6	150	57	216	241.5	8	22	110	125	65	319
8	200	67	270	298.5	8	22	158	172	61	373
10	250	76	324	362.0	12	25	184	222	53	394
12	300	86	381	432.0	12	25	232	256	53	510



## PRODUCT SYSTEM

- Chemical Plants
- Fats, Oils, Fatty Acid and Detergent Plants
- Power Plants-Fossil Fuel
- Breweries & Distilleries
- Electrical Component Plants
- Foundries
- Power Plant-Nuclear
- Coke By-Products Plants
- Food Processing Plants
- Paint & Paint Product Plants
- Textile Industry
- Steel & Other Metal Processing Plants
- Rubber & Synthetic Rubber Products Plants
- Petroleum Products & Handling Systems
- Pulp & Paper Plants
- Pharmaceutical Plants
- Water Treatment-Purification



## PT. Unggul Prakarsa Prisma

Intercon Plaza Blok D8-9, Srengseng, Kembangan, Jakarta Barat - Indonesia

Phone: +62 21-5890 1302

Web : [www.unggulpp.com](http://www.unggulpp.com)