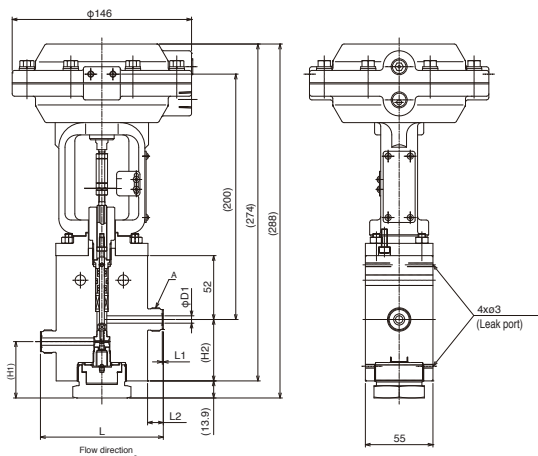


Automatic Valves with UPG® Fittings

Features

1. Fittings are installed without load for surrounding piping by adopting unique metal gasket-type.

95 MPa Type



Specifications

Design Pressure	95 MPa
Design Temperature	85 °C
Fluid Temperature Range	-40 to +85 °C

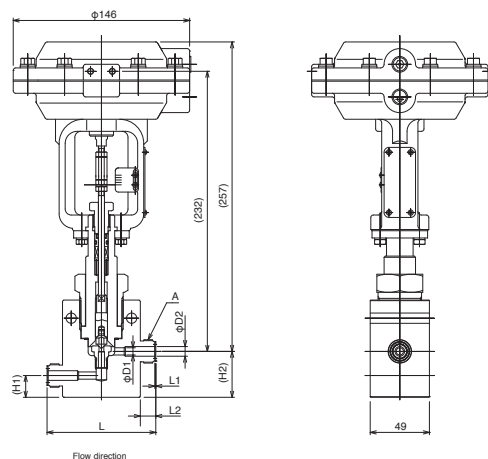
Materials

Parts	Materials
Body	SUS316+Co base alloy
Seat	SUS316+Co base alloy
Stem	SUS316+Co base alloy
Gland Packing	PVDF+PFA
O-ring	HNBR

Dimensions, Ordering No.

Nominal Diameter	Connection			Thread	Interfacial Distance	H1	H2	Cv Value MAX.	Mass (approx.) (kg)	Ordering No.
	D1	L1	L2	A	L					
6.35	3.2	0.7	10	7/16-20UNF	95	45.9	50	0.1	6.6	M3R4-795-6.35UPG-N28.5
9.52	4.35	0.7	11	9/16-20UN	97	45.9	50	0.25	6.6	M3R4-795-9.52UPG-N28.5
12.7	6	0.7	12.8	3/4-20UNEF	100	45.9	50	0.25	6.6	M3R4-795-12.7UPG-N28.5

50 MPa Type



Specifications

Design Pressure	50 MPa
Design Temperature	85 °C
Fluid Temperature Range	-40 to +85 °C

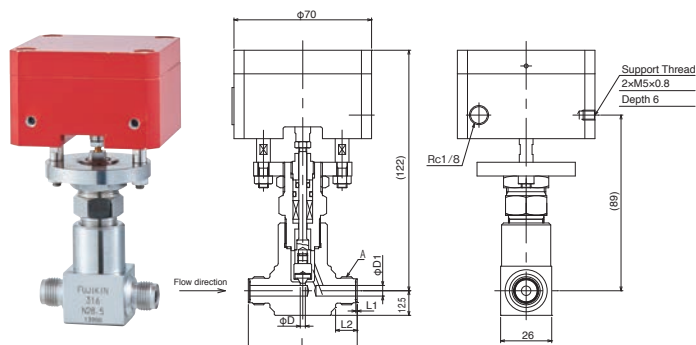
Materials

Parts	Materials
Body	SUS316+Co base alloy
Seat	SUS316+Co base alloy
Disc	SUS316+Co base alloy
Stem	SUS316
Gland Packing	PFA+PVDF
O-ring	HNBR

Dimensions, Ordering No.

Nominal Diameter	Connection				Thread	Interfacial Distance	H1	H2	Cv Value MAX.	Mass (approx.) (kg)	Ordering No.
	D1	D2	L1	L2	A	L					
6.35	2.8	3.9	0.83	10	7/16-20UNF	85	18	38	0.15	4	M3R4-750-6.35UPG-N28.5
9.52	3.2	5.4	0.83	11	9/16-20UN	87	18	38	0.15	4	M3R4-750-9.52UPG-N28.5
12.7	6	8	0.83	12.8	3/4-20UNEF	90	18	38	0.5	4	M3R4-750-12.7UPG-N28.5

45 MPa Type



Specifications

Design Pressure	45 MPa
Design Temperature	80 °C
Fluid Temperature Range	-10 to +80 °C

Materials

Parts	Materials
Body	SUS316+Co base alloy
Disc Packing	PEEK
Stem	SUS316 (Au Plating)
Gland Packing	PTFE
O-ring	HNBR

Dimensions, Ordering No.

Nominal Diameter	Orifice Diameter	Connection			Thread	Interfacial Distance	Cv Value MAX.	Mass (approx.) (kg)	Ordering No.	
	D	D1	D2	L1	L2	A				L
6.35	2.6	4	3.9	0.7	10	7/16-20UNF	53.4	0.2	0.9	APR-UM-745-6.35UPG-N28.5
9.52	2.6	4	5.4	0.7	11	9/16-20UN	55.4	0.2	0.9	APR-UM-745-9.52UPG-N28.5
12.7	2.6	4	8	0.7	12.8	3/4-20UNEF	59	0.2	0.9	APR-UM-745-12.7UPG-N28.5