

AV FLANGE

● TS FLANGES(PVC,HI-PVC,C-PVC)



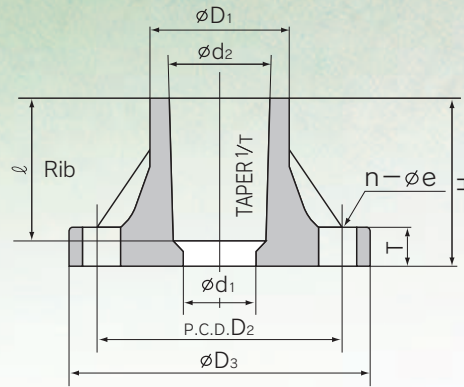
PVC



HI-PVC



C-PVC



DIMENSIONS TABLE

Nominal Size		PVC		JIS 10K 13mm - 350mm(³ / ₈ inch - 14inch)		JIS 5K 13mm - 350mm(³ / ₈ inch - 14inch)		HI-PVC		JIS 10K 13mm - 300mm(³ / ₈ inch - 12inch)		JIS 5K 13mm - 150mm(³ / ₈ inch - 6inch)		Unit:mm								
mm	inch	d ₁	d ₂		Taper 1/T		ℓ		D ₁		D ₂		D ₃		n		e		T		H	
			10K	5K	10K	5K	10K	5K	10K	5K	10K	5K	10K	5K	10K	5K	10K	5K	10K	5K	10K	5K
13	3/8	15	18.40		1/30		26	25.5	24	65	55	90	75	4	4	15	12	14	9	30	30	
15	1/2	18	22.40		1/34		30	31	29	70	60	95	80	4	4	15	12	14	9	35	35	
20	3/4	22	26.45		1/34		35	35	33	75	65	100	85	4	4	15	12	15	10	40	40	
25	1	25	32.55		1/34		40	42.5	40	90	75	125	95	4	4	19	12	15	10	46	45	
32	1 1/4	30	38.60		1/34		44	48.5	46	100	90	135	115	4	4	19	15	16	12	50.5	50	
40	1 1/2	41	48.70		1/37		55	60.5	59	105	95	140	120	4	4	19	15	16	12	61.5	61	
50	2	52	60.80		1/37		63	73	70	120	105	155	130	4	4	19	15	20	14	71	72	
65	2 1/2	67	76.60	76.80	1/48	1/41	61	69	90	86	140	130	175	155	4	4	19	15	22	14	70	76
80	3	78	89.60	89.80	1/49	1/43	64	72	105	101	150	145	185	180	8	4	19	19	22	14	73	80
100	4	100	114.70	115.00	1/56	1/44	84	92	131	129	175	165	210	200	8	8	19	19	22	16	93	105
125	5	125	140.85	141.20	1/58	1/45	104	112	158	156	210	200	250	235	8	8	23	19	24	16	114	126
150	6	146	166.00	166.50	1/63	1/45	132	140	185	185	240	230	280	265	8	8	23	19	26	18	142	150
200	8	196	217.00		1/50		145	238	238	290	280	330	320	12	8	23	23	28	28	156	156	
250	10	247	268.00		1/55		155	289	289	355	345	400	385	12	12	25	23	30	30	167	167	
300	12	298	318.70		1/55		155	341	341	400	390	445	430	16	12	25	23	30	30	167	167	
350	14	348	371.00		1/60		230	398	398	445	435	490	480	16	12	25	23	34	34	300	300	

Note : Dimensions shown as D₂,D₃,n,e are accordance with JIS 10K and JIS 5K.
 Dimeter sizes of bolt holes for 5K 300mm(12inch)are different from JIS 5K.

Nominal Size		C-PVC		JIS 10K 13mm - 150mm(³ / ₈ inch - 6inch)		JIS 5K 13mm - 65mm(³ / ₈ inch - 2 1/2inch)		Unit:mm											
mm	inch	d ₁	d ₂	Taper 1/T	ℓ	D ₁		D ₂		D ₃		n		e		T		H	
						10K	5K	10K	5K	10K	5K	10K	5K	10K	5K	10K	5K	10K	5K
13	3/8	15	18.40	1/30	26	28	24	65	55	90	75	4	4	15	12	14	9	30	30
15	1/2	18	22.40	1/34	30	33	31	70	60	95	80	4	4	15	12	14	9	35	35
20	3/4	22	26.45	1/34	35	36	33	75	65	100	85	4	4	15	12	14	10	40	40
25	1	25	32.55	1/34	40	43	43	90	75	125	95	4	4	19	12	16	10	50	45
32	1 1/4	30	38.60	1/34	44	51	51	100	90	135	115	4	4	19	15	16	12	50.5	50
40	1 1/2	41	48.70	1/37	55	65	65	105	95	140	120	4	4	19	15	16	12	65	61
50	2	52	60.80	1/37	63	76	76	120	105	155	130	4	4	19	15	20	14	74	72
65	2 1/2	67	76.80	1/41	69	92	86	140	130	175	155	4	4	19	15	22	14	82	76
80	3	78	89.80	1/43	72	108	—	150	—	185	—	8	—	19	—	22	—	86	—
100	4	100	115.00	1/44	92	138	—	175	—	210	—	8	—	19	—	22	—	105	—
125	5	125	141.20	1/45	112	165	—	210	—	250	—	8	—	23	—	22	—	126	—
150	6	146	166.00	1/63	132	185	—	240	—	280	—	8	—	23	—	26	—	142	—

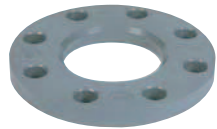
Note : Dimension shown as D₂,D₃,n,e are accordance with JIS 10K and JIS 5K.

AV TS FLANGES PVC ANSI 1/2 inch - 12inch(15mm - 300mm)

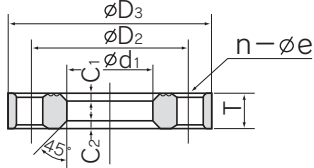
ANSI		Unit:inch										
Nominal Size	mm inch	d ₁	d ₂	Taper 1/T	ℓ	D ₁	ANSI CLASS 150				T	H
							D ₂	D ₃	n	e		
15	1/2	0.71	0.88	1/34	1.61	1.22	2.38	3.50	4	0.62	0.47	1.18
20	3/4	0.87	1.04	1/34	1.89	1.38	2.75	3.88	4	0.62	0.51	2.09
25	1	0.98	1.28	1/34	1.57	1.67	3.12	4.25	4	0.62	0.59	1.97
32	1 1/4	1.18	1.52	1/34	1.73	1.91	3.50	4.62	4	0.62	0.63	2.13
40	1 1/2	1.61	1.92	1/37	2.17	2.38	3.88	5.00	4	0.62	0.71	2.56
50	2	2.05	2.39	1/37	2.48	2.87	4.75	6.00	4	0.75	0.79	2.91
65	2 1/2	2.64	3.02	1/41	2.72	3.54	5.50	7.00	4	0.75	0.91	3.23
80	3	3.07	3.54	1/43	2.83	4.13	6.00	7.50	4	0.75	0.94	3.39
100	4	3.94	4.53	1/44	3.62	5.16	7.50	9.00	8	0.75	0.94	4.21
125	5	4.92	5.56	1/45	4.41	6.22	8.50	10.00	8	0.88	0.94	5.12
150	6	5.75	6.54	1/63	5.20	7.28	9.50	11.00	8	0.88	1.02	5.59
200	8	7.72	8.54	1/50	5.71	9.37	11.75	13.50	8	0.88	1.10	6.14
250	10	9.72	10.56	1/55	6.10	11.81	14.25	16.00	12	1.00	1.18	6.57
300	12	11.73	12.55	1/55	6.10	13.43	17.00	19.00	12	1.00	1.18	6.57

Note : Dimension shown as D₂,D₃,n,e are accordance with ANSI/ASME B 16.5 CLASS 150.
Dimension shown as d₁, R, taper 1/T are accordance with JIS K 6743.

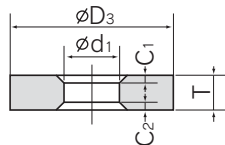
● AV FLANGES(PVC,PP)



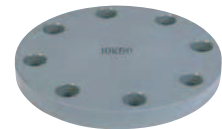
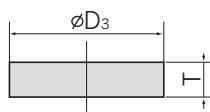
① FLANGES



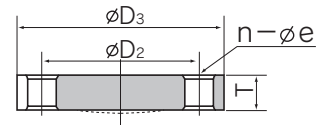
② FLANGES



③ FLANGES



④ FLANGES



Nominal Size 13mm(3/8inch) - 300mm(12inch)

※ The figure described by broken(dashed) line shows shape of Q-flanges applied for dead end service of piping. 15(1/2inch) - 150mm(6inch)

DIMENSIONS TABLE

AV ①, ②, ③, ④, FLANGES		PVC	JIS 10K 13mm - 300mm(3/8inch - 12inch)	JIS 5K 13mm - 300mm(3/8inch - 12inch)	Unit:mm									
Nominal Size	mm inch	d ₁	D ₂		D ₃		n		e		T		C ₁	C ₂
			10K	5K	10K	5K	10K	5K	10K	5K	10K	5K		
13	3/8	18	65	55	90	75	4	4	15	12	12	9	3	3
15	1/2	22	70	60	95	80	4	4	15	12	12	9	3	3
20	3/4	26	75	65	100	85	4	4	15	12	14	10	3	3
25	1	32	90	75	125	95	4	4	19	12	14	10	3	3
32	1 1/4	38	100	90	135	115	4	4	19	15	16	12	3	3
40	1 1/2	48	105	95	140	120	4	4	19	15	16	12	3	3
50	2	60	120	105	155	130	4	4	19	15	16	14	3	4
65	2 1/2	76	140	130	175	155	4	4	19	15	18	14	3	4
80	3	89	150	145	185	180	8	4	19	19	18	14	3	4
100	4	114	175	165	210	200	8	8	19	19	18	16	3	4
125	5	140	210	200	250	235	8	8	23	19	20	16	4	4
150	6	165	240	230	280	265	8	8	23	19	22	18	4	4
200	8	216	290	280	330	320	12	8	23	23	22	20	4	4
250	10	267	355	345	400	385	12	12	25	23	24	22	4	4
300	12	318	400	390	445	430	16	12	25	23	24	22	4	4

Note : Dimension shown as D₂,D₃,n,e are accordance with JIS 10K and JIS 5K.

- ① and ② are welded flanges.
- ③ and ④ are blind flanges.